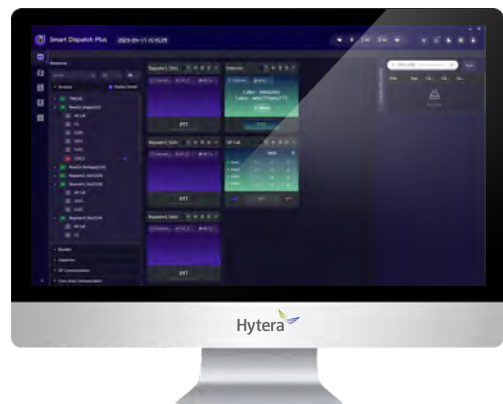




## Hytera Smart Dispatch Plus

- High-Efficiency Management
- Integrated Applications
- Flexible Network and Easy Deployment
- User-Friendly





## Professional Solutions Enhance Your Management Efficiency

### Rapid Response for Public Safety

The increasing frequency of natural disasters and public emergencies poses a great challenge to public safety agencies like police, law-enforcement and firefighting. To respond effectively when emergencies arise, a secure, reliable, and efficient despatch system is urgently needed.

### High Efficiency for Business Group

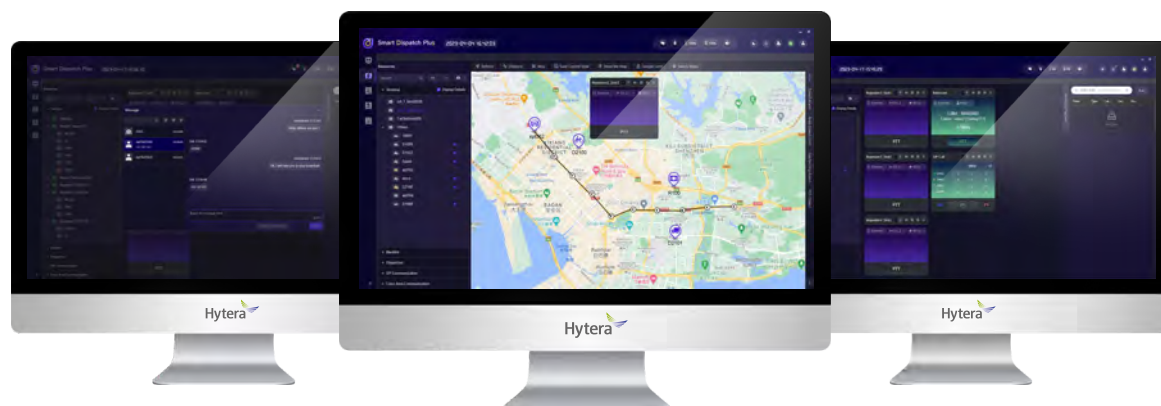
In an ever-changing world and evolving work environment, highly efficient resource deployment and quick responses to customers are essential for any business group aiming to thrive and grow.

### Hytera Understands Your Needs

As a leading supplier of professional wireless communications equipment and solutions, Hytera has over 30 years of experience in the PMR industry. We are ready to help you tackle these challenges with the Hytera Smart Dispatch Plus digital despatch solution.

### Hytera Smart Dispatch Plus

Hytera Smart Dispatch Plus is designed for DMR conventional radio systems, offering efficient communication, management, and despatching functions. Characterised by its structured, modular design and support for VoIP, Hytera Smart Dispatch Plus provides an enhanced despatching platform with high scalability and durability.





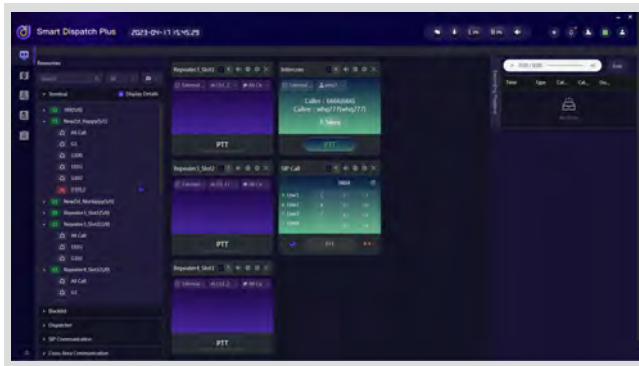
# KEY FEATURES



## VOICE

### ➤ All Types of Voice Call

Support all types of calls including private calls, group calls and all calls to meet your various despatching needs.



### ➤ Voice Recording & Playback

Record all voice calls in network. Easy search and playback.

### ➤ Telephone Interconnection

Support SIP standard protocol to integrate with standard IP-PBX for voice interconnection.

### ➤ Dispatcher Intercom

All online dispatchers can make a half-duplex call to each other.



## DATA SERVICES

### ➤ Online/Offline Status Reporting

Display the online/offline status of a radio when it is switched on or off.

### ➤ Message

Send and receive text messages. Schedule text messages to be sent to the radios.

### ➤ Email Interconnection

Send text messages to radio users via email. Radio users can also send text messages to an email address.

### ➤ Report Enquiry

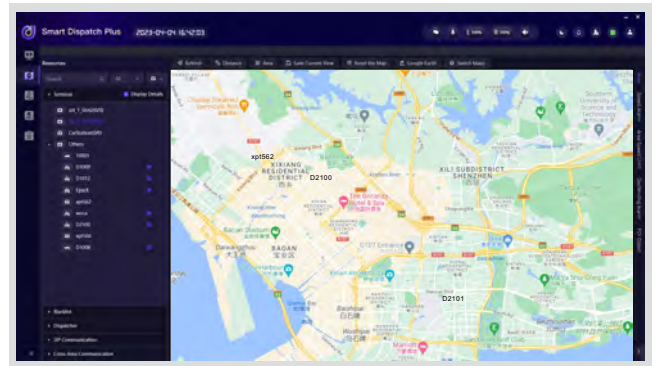
Generate various useful reports. These reports can be obtained through keywords or exported in Excel or HTML format.



## GNSS (AVL)

### ➤ GNSS Positioning

Display GNSS location information on the map, including radio ID, alias, GNSS time, longitude, latitude, and speed.

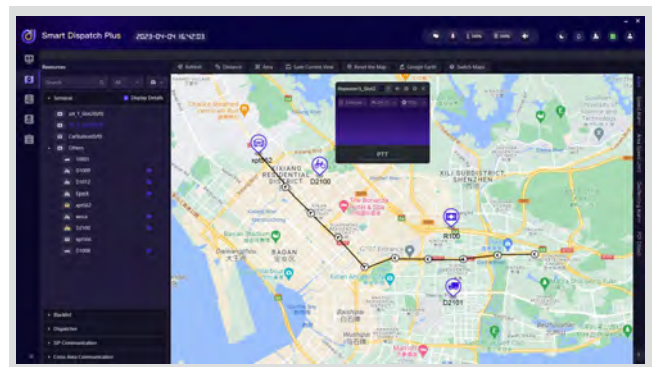


### ➤ Support for Multiple Map Engines

Choose your preferred map based on your specific usage requirements. Supported maps include Google Maps, Google Offline Map, and Open Street Map.

### ➤ Real-time/Historical Tracking

Track the location of radios in real time and display their routes on the map. Record and retrieve the history of radio tracks and replay them on the map.



### ➤ Call on Map

Select a radio on the map and make a call to it.



## SAFETY

### ➤ Database Backup & Recovery

Support both manual backups or scheduled automatic backups to protect the database and recordings against data loss.

### ➤ Authorisation Management

The administrator can assign specific permission to the dispatcher.

### ➤ Disable/Enable

Remotely disable or enable a radio. The command will be saved if the radio is offline and automatically sent once the radio is online.

### ➤ Remote Monitor

Remotely activate the microphone of a radio to covertly monitor and record any audible activities around it.

### ➤ Call Alert

If the dispatcher fails to reach a radio user, they can send a Call Alert to remind the radio user to call back.



## ALARM

### ➤ Emergency Alarm

When an emergency is triggered, the highlighted emergency message will pop up at the top of dispatcher workspace, accompanied by a siren sound.



### ➤ Geofencing Alarm

Define working areas on the map for radios and send alarm message to radios once they move out of the preset areas.

### ➤ Overspeed/Underspeed Alarm

Define the movement speed limits for radios, send alarm message to radios once the speed is exceeds or falls below the preset limits.

### ➤ Lone Worker

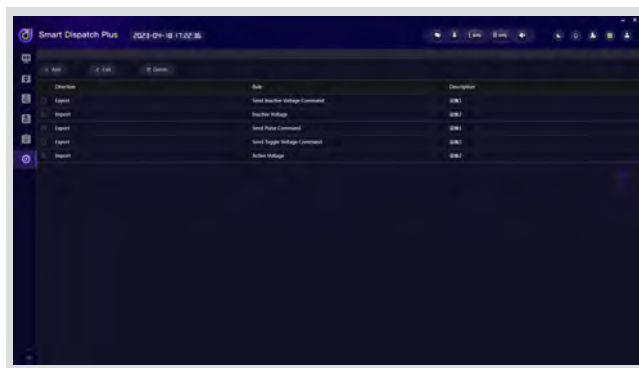
An alarm will be displayed on the despatch client if a radio user does not operate the radio within a preset time.



## APPLICATION

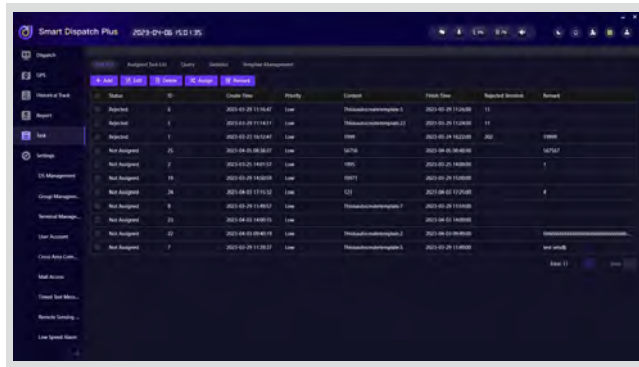
### ➤ Telemetry

Remotely monitor and control peripheral devices connected to the radios.



### ➤ Work Order

Create, assign and monitor work orders to ensure all tasks are completed on time. It also supports queries and statistics, helping the dispatcher improve the management efficiency.



### ➤ Over-The-Air-Programming (OTAP)

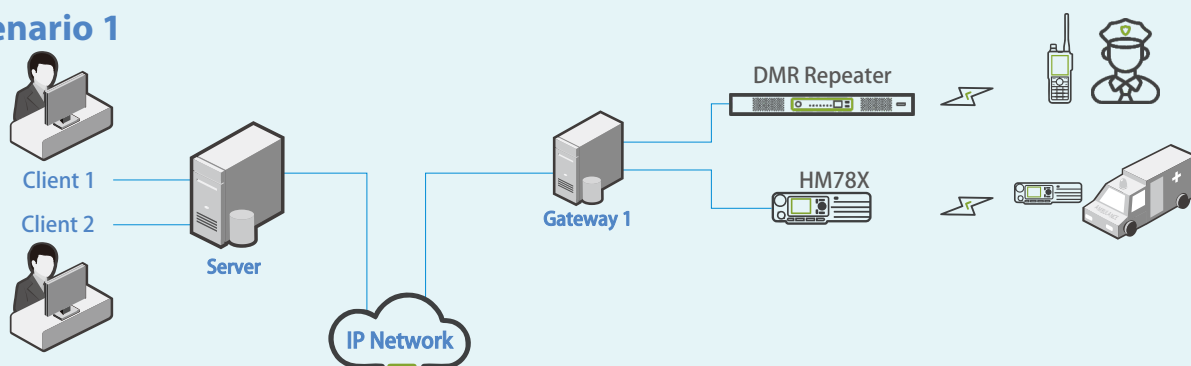
Remotely program various parameters on one or multiple radios simultaneously. These parameters include radio ID, radio alias, color code, slot, TX and RX frequency, RX group list, and TX contact name.

# FLEXIBLE DISTRIBUTED NETWORKING

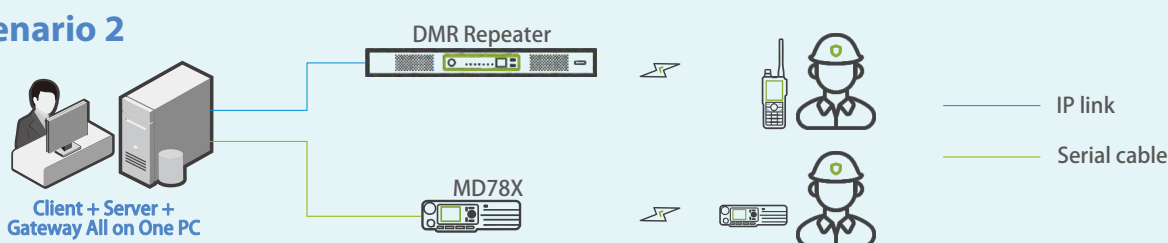
Smart Dispatch Plus adopts a modular design, consisting of a server, client, and gateway. It can be flexibly deployed based on your requirements.

- Server, gateway and client can be deployed in different locations.
- Server, gateway and client can also be installed on the same computer.
- Both repeaters and mobile radios can connect to Smart Dispatch Plus.

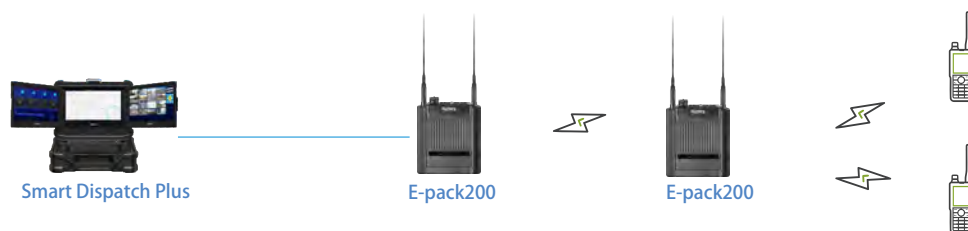
## Scenario 1



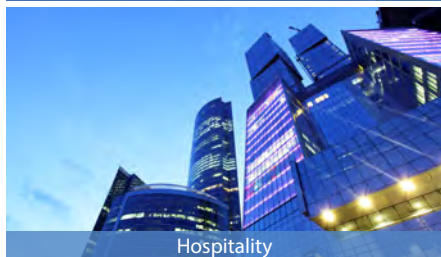
## Scenario 2



## Smart Dispatch Plus for E-pack200



## APPLICATION SCENARIOS



# SPECIFICATIONS

## System Requirements

Operating System	Windows 10 /Windows 11 //Windows Server 2016/ Windows Server 2019
RAM	≥ 16GB
One Voice Channel Bandwidth	≤120Kbps
Database	PostgreSQL-14.6

## System Capacity

1 Server	Up to 32 clients
	Up to 24 gateways
	Up to 32 voice channels
1 Gateway	Up to 16 DMR repeaters or 16 HM78X mobile radios or 4 MD78X mobile radios or 1 E-pack200

## Firmware Version

Repeater	HR106X	V2.0.01.009(DMR) or later
	RD98X/RD98XS	V9.02.04.004 or later
Mobile Radio	HM78X	V2.0.04.005 or later
	MD78X	V10.0.02.002 or later
E-pack	E-pack 200	N2.0.00.006 or later

### Hytera Communications Europe

939 Yeovil Road, Slough, Berkshire, SL1 4NH

[info@hytera-europe.com](mailto:info@hytera-europe.com) | [www.hytera-europe.com](http://www.hytera-europe.com)



[www.facebook.com/HyteraEurope](https://www.facebook.com/HyteraEurope)



[www.linkedin.com/company/hytera-communications-uk](https://www.linkedin.com/company/hytera-communications-uk)



[www.instagram.com/Hytera.Europe](https://www.instagram.com/Hytera.Europe)



Subscribe on YouTube



Hytera reserves the right to modify the product design and the specifications.

In case of a printing error, Hytera does not accept any liability. All specifications are subject to change without notice.